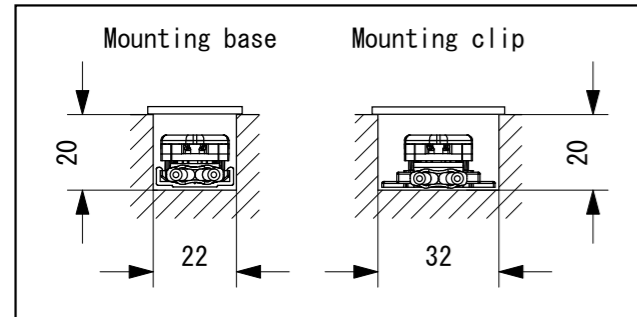
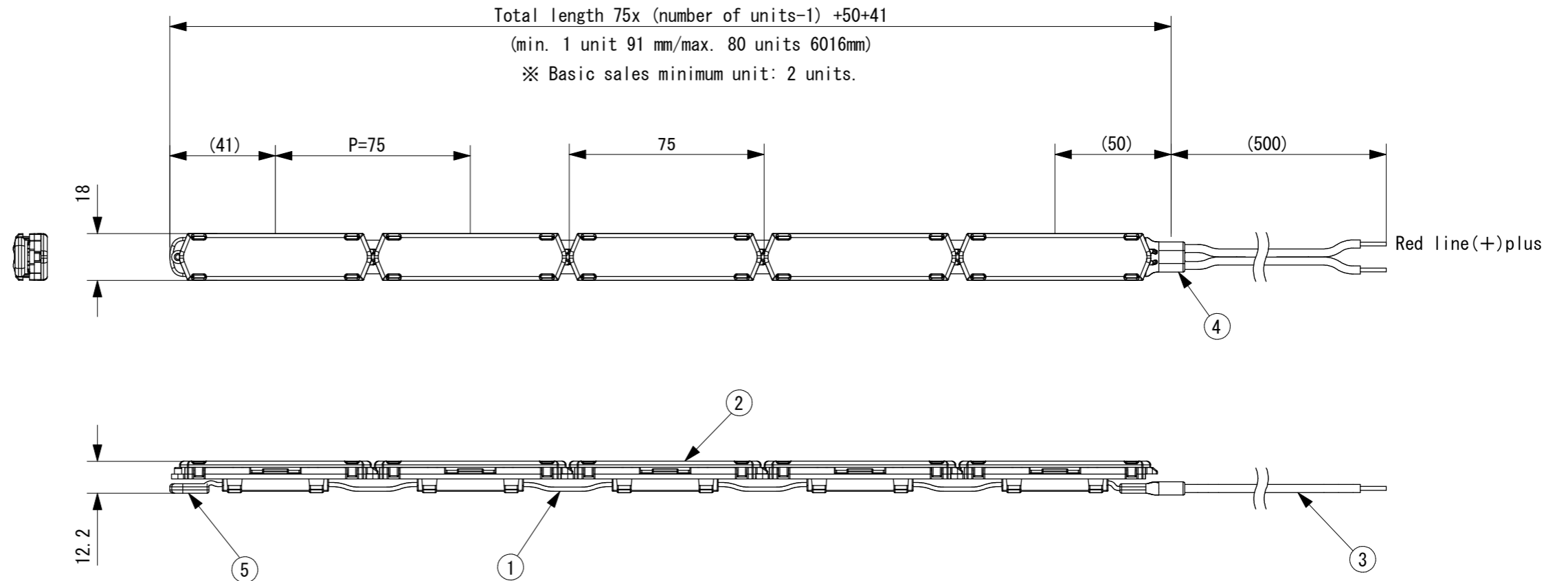
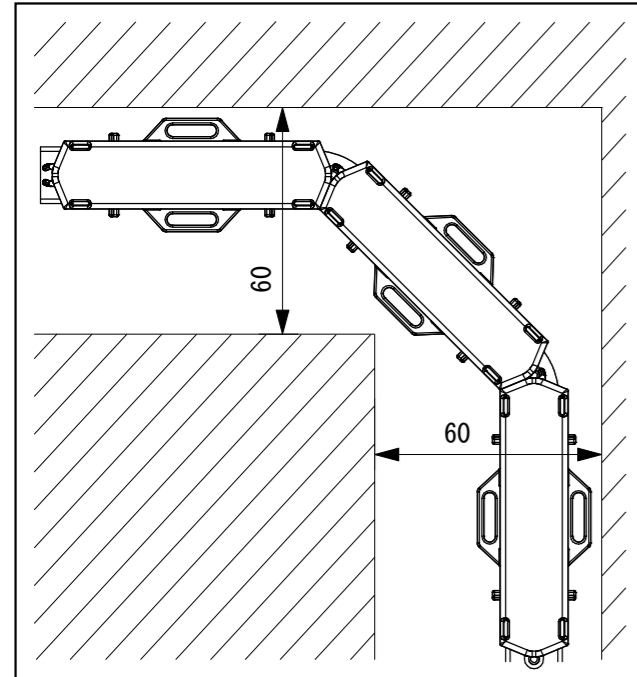


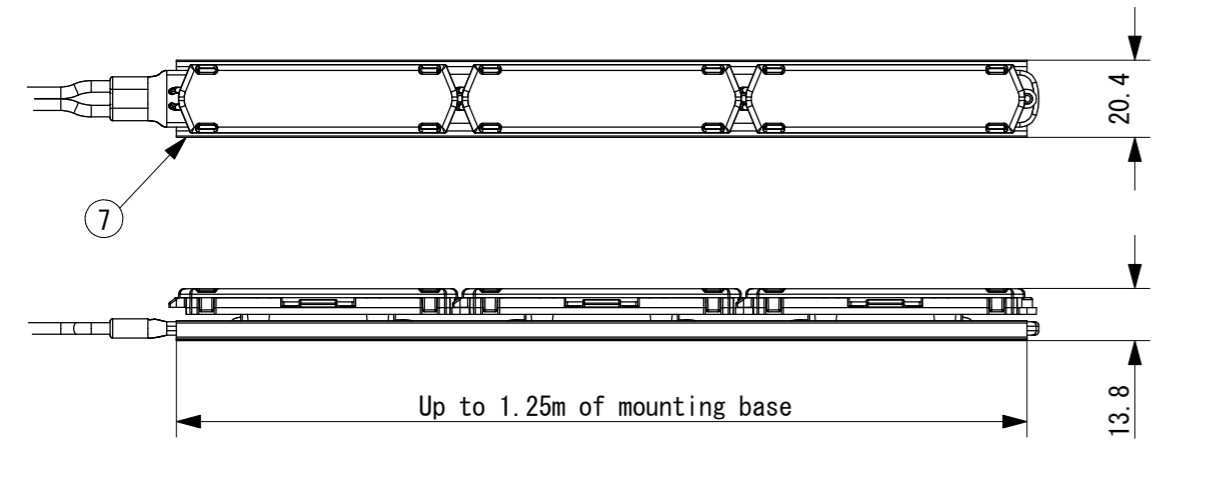
Recommended installation dimensions (sealed environment)



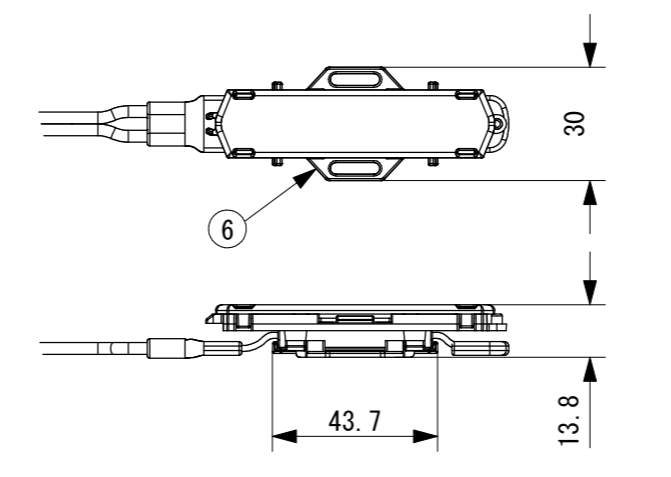
Curve Construction



Installation with mounting base (optional accessory)



Installation with clip (optional accessory)



Note

- Dedicated control devices are required for dimming and toning.

SPECIFICATION

- Input voltage : 24VDC
- Power : 1.5W/unit @75mm
- Color : 2500k/4000k
- CRI : 85
- Installation direction : floor mounting, ceiling mounting, wall-mounting, inclined mounting. For use mounting base for straight line and use clip on the curve.

No.	Parts 部品	Material 材料	Memo 備考
7	Mounting base	PVC	Sold separately MC20-1.25 (1.25m)
6	Mounting clip	PC	EVO-CP/10 sold separately (10pieces)
5	End cap	PVC	
4	Code protector	PVC	
3	Lead wire	PVC	1.25mm ² × 2
2	LED lamp	PC	
1	Wire cable	PVC	

Note

- During wall mounting vertical installation, at least one unit at the top should be fixed with mounting clips and then use mounting base for installation.

Date 日付	2020. 11. 04	Scale 縮尺	1:2	Title 名称	TOKILUX EVO KT SUBMITTAL
Draft 製図	K. Otani	Weight 重量	15g/unit	Product No. 製品番号	TLX-EVO-KT
Check 検図	T. Inaba	Unit 単位	mm	TOKI CORPORATION Tel 03-5763-6121 Fax 03-5763-6130	
Approve 承認	C. Ishibiki	Size 用紙	A3		