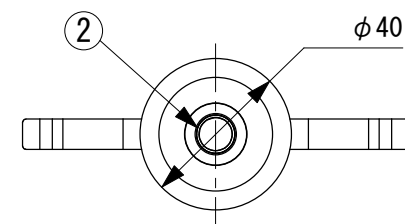
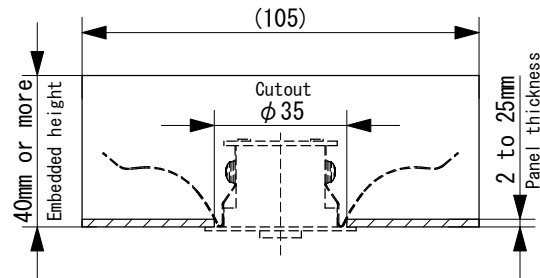
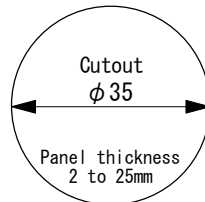


Power supplies are not included (sold separately).

Specifications	
- Voltage	: 24VDC
- Wattage	: 2.6W
- LED Color	: 2700K (27K, HC27K) 3000K (30K, HC30K) 3500K (35K, HC35K) 4000K (40K, HC40K) 5000K (50K, HC50K)
- CRI	: 85 (Standard) 95 (HC, High color rendering)
- Beam Angle	: 16° (16D) 24° (24D) 30° (30D)
- Body Color	: Black (B) White (W) Silver (S)
- Weight	: 50g (Main unit) 100g (incl. Control Circuit)



P/N configuration:
MDL02 - 30K - 30D - B
 LED Color Beam Angle Body Color

6			
5			
4			
3	Control circuit		L46×W15×H11
2	Eyeball	Aluminum	
1	Body	Aluminum	
No.	Parts 部品	Material 材料	Memo 備考

Date 日付 2022/3/7
 Draft 製図 Y. Terabe
 Check 検図 T. Inaba
 Approve 承認 C. Ishibiki

Scale 縮尺 1:2
 Weight 重量 100g
 Unit 単位 mm
 Size 用紙 A4

Title 名称 Micro Downlight Standard

Product No. 製品番号 MDL02- K- D-
LED Color Beam Angle Body Color

TOKI CORPORATION
 トキ・コーポレーション株式会社