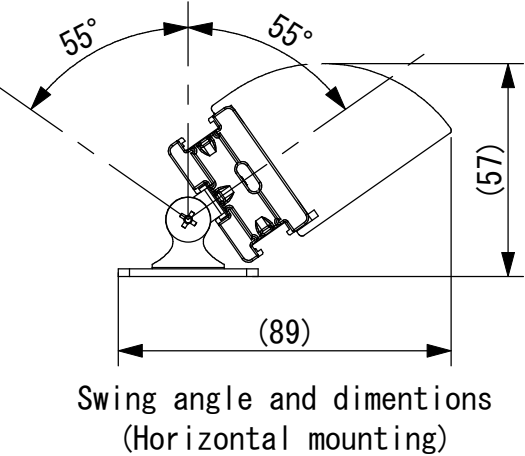
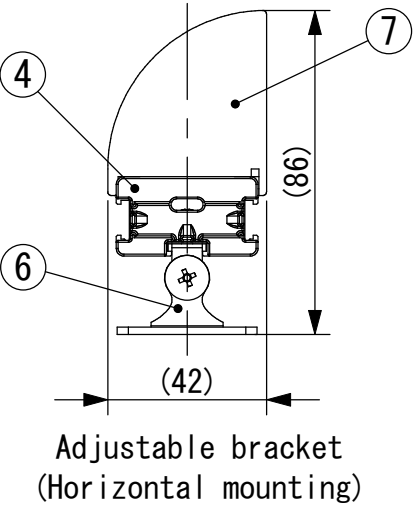
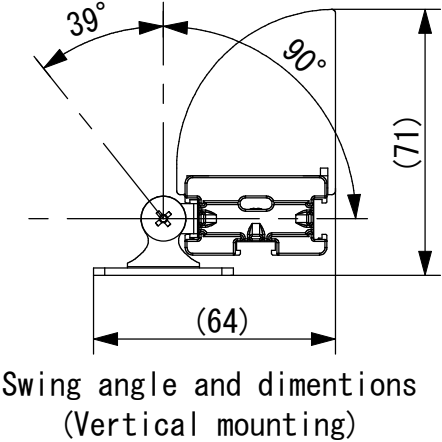
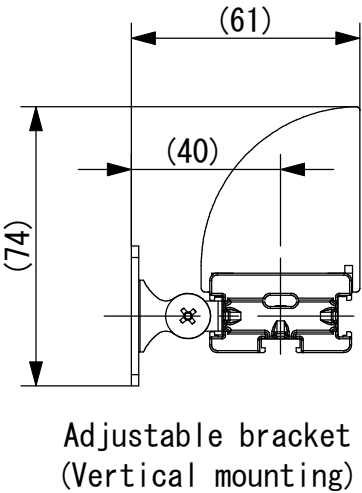
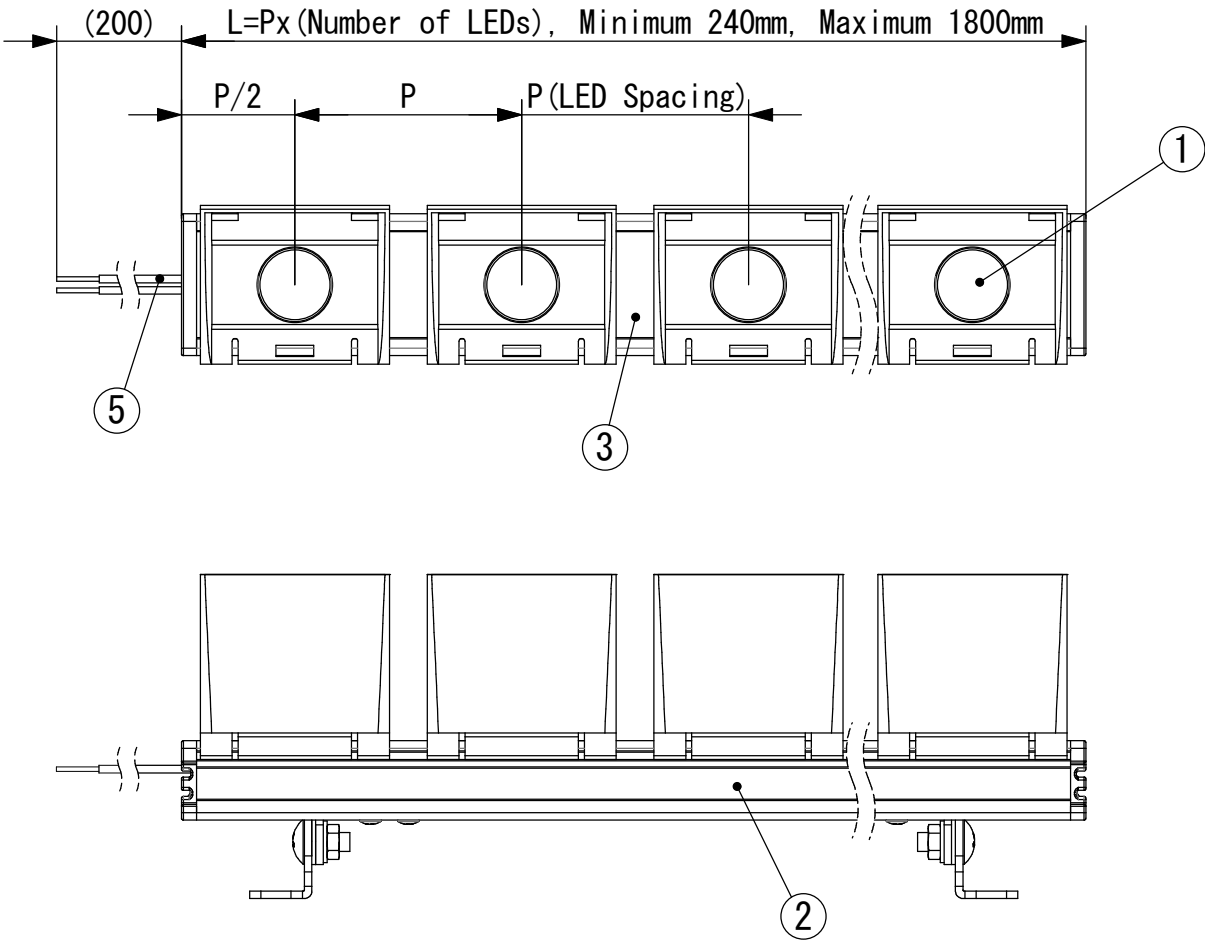
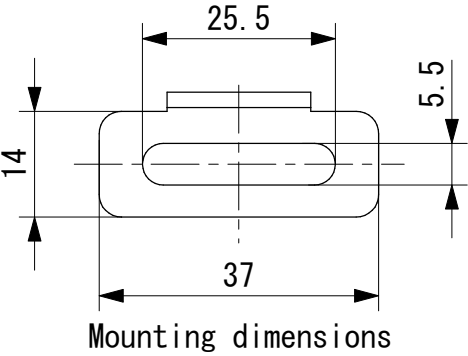


Specifications	
Current	: 700mA
Power	: 2.1W/LED
LED Spacing	: 60mm, 75mm, 100mm
Number of LEDs	: 4 to 18 LEDs
Color temperature	: 2700K, 3000K, 3500K, 4000K
Beam angle	: SP (Spread/40° x 15°), 15D (15°)
CRI	: 85

- * Do not work on live wires.
- * Dedicated constant current LED power supply is required.

P/N configuration : GRHB- - K-
LED spacing Color temp. Beam angle



7	Parallel louver	PC	Black Cut-off angle (Side) : 50° Cut-off angle (Back) : 55° P/N : GRHB-PLVR (optional parts)
6	Adjustable bracket	SUS	P/N : GRHB-ADJB (optional parts) Qty./set
5	Lead cable		AWG18×2 [RED + , BLACK -]
4	End plate	PC	Black
3	Cover	AL	Surface treatment: Black almite
2	Extrusion	AL	Surface treatment: Black almite
1	LED lens cover		
No.	部品 Parts	材料 Material	備考 Memo

Date 日付	2016. 6. 8
Draft 製図	Hirai
Check 検図	Miwa
Approve 承認	Ichibiki
Scale 縮尺	1:2
Weight 重量	xxkg/()
Unit 単位	mm
Size 用紙	A3

Title 名称 Gradient HB with Adjustable Bracket & Parallel Louver
Product No. 製品番号 GRHB- - K- (GRHB-ADJB & GRHB-PLVR)
TOKI CORPORATION
トキ・コーポレーション株式会社